



# Place2Be Carol Concert

Thursday 3 December 2020



# TAYLOR HOWES

Est. 1993 | London



‘At Christmas, all roads lead home’

Wishing you a Merry Christmas from the Taylor Howes team, a passionate interior design studio in the heart of London.

[www.taylorhowes.co.uk](http://www.taylorhowes.co.uk)





# Welcome

Despite 2020 proving to be one of the toughest years we have ever faced at Place2Be, I am incredibly proud of our teams who have used all of their creativity, perseverance and skill to ensure that we could still be there for the children and young people who needed us most.



One mum of four told us: **"You're the only person that has been there for me throughout all of this. The only person I speak to some weeks. It's been really helpful because I can talk to you and I trust you, as I know you're there for all of us."**

We were there for 11-year-old Grace, whose dad shared that Grace was suffering with terrible migraines and sickness as a result of her anxiety during lockdown. Now I'm pleased to share that thanks to our support, Grace is managing well at secondary school.

We were there for Caleb, an 8-year-old boy whose parents are both nurses. Although his parents tried their best to protect him from the emotional impact of the virus, he was still very worried about whether they'd come home from work, and if they'd be safe. Caleb has received one-to-one support from Place2Be, and has also invited his friends to come with him for a 'Place2Talk' session during lunch break, so that he can help them understand what is going on for him.

Place2Be has always been at the heart of school communities – but this year has demonstrated, more than ever before, just how crucial that embedded support is in order to ensure that some of our most 'hard to reach' families get the support they desperately need.

A seven-year-old boy told one of our school-based staff: **"I don't want to upset mummy and daddy but I sometimes worry about things."**

Now more than ever, it is also vital that our mental health practitioners are there to support teachers and school staff, to help them understand children and young people's behaviour and support their wellbeing.

By being here (albeit virtually) with us tonight, you are helping us to make sure that more children and young people have someone to turn to.

My huge and heartfelt thanks to each of you for supporting our belief that no child should face mental health problems alone.

**Catherine Roche, Chief Executive**



*Front cover illustration  
by Natalia Shaloshvili.*





## How we help

**Place2Be is a pioneering children's mental health charity. We provide in-school support and expert training across England, Scotland and Wales to improve the emotional wellbeing of pupils, families, teachers and staff.**

Founded in 1994, Place2Be has grown from supporting a handful of schools, to working with over 700 schools each year to help them become more 'mentally healthy'.

In response to COVID-19, Place2Be was able to quickly adapt its services to ensure that vulnerable families continued to receive support. During lockdown, we conducted over 35,000 phone sessions, as well as offering young people online support services.

Place2Be builds children's resilience through talking, creative work and play. We help children and young people to cope with wide-ranging and often complex issues including bullying, bereavement, domestic violence, family breakdown, neglect and trauma.

Now more than ever, our support is needed to ensure that no child has to face mental health problems alone.

*"During lockdown and throughout the school summer holidays, Place2Be continued to support our children and families. This ongoing support certainly enabled very vulnerable children and families to cope far better than we could have hoped for otherwise."*

*"You can have an army of the best teachers in the world, but if the psychological barriers to learning are not addressed, a child isn't going to learn, or use that learning as effectively as they could."*

Jo Geary, Headteacher, Leeds





## Alfie's story

**During lockdown, six-year-old Alfie started to show worrying signs of self-harm, hitting and pinching himself when his mum told him off. His mum had already built up a trusting relationship with Sarah, Place2Be's mental health professional based at his school.**



Alfie was really struggling with not being able to go to school. He got into regular confrontations with his mum, and wouldn't listen to her. Alfie's mum is a single parent and their relationship had been strained before, but everything had magnified with spending so much time together at home. She was also worried about her job in a warehouse.

Sarah's non-judgemental attitude meant that during their weekly telephone sessions, Alfie's mum felt able to open up about what had been happening, and her worries about her son.

Sarah explained the situation to the Head Teacher and arranged for Alfie to attend school three days a week, as well as restarting his weekly face-to-face Place2Be sessions. After a few weeks of being back in a routine, things had improved dramatically. Alfie's mum even sent Sarah a photo of her and Alfie enjoying themselves in the garden.

As schools fully reopened in September, Sarah was on hand to make sure Alfie was settling in OK, and to provide further support to Alfie and his mum if needed.

*Names have been changed to protect the identities of children and their families.*





# PERIDOT

"WHAT IS CHRISTMAS? IT IS TENDERNESS FOR THE PAST,  
COURAGE FOR THE PRESENT, HOPE FOR THE FUTURE."

- Agnes M. Pharo -

WITH ALL GOOD WISHES FOR A  
HAPPY & PEACEFUL FESTIVE PERIOD FROM PERIDOT PR

PUBLIC RELATIONS | STORY TELLING | CREATIVE MARKETING | STRATEGY  
[www.peridotpr.com](http://www.peridotpr.com) | [@peridotpr](https://twitter.com/peridotpr)



## WHITE WOLF CONSTRUCTION

RENOVATIONS | EXTENSIONS | DEVELOPMENTS



SPECIALISTS IN HIGH-END RESIDENTIAL CONSTRUCTION  
PROJECTS ACROSS LONDON & THE HOME COUNTIES.

*Proud to support Place2Be at Christmas.*

[WHITEWOLFCONSTRUCTION.CO.UK](http://WHITEWOLFCONSTRUCTION.CO.UK) • [INFO@WHITEWOLFCONSTRUCTION.CO.UK](mailto:INFO@WHITEWOLFCONSTRUCTION.CO.UK)





# Programme

## Introduction

**Katie Thistleton** and **Joe Stilgoe**

## Welcome

**The Revd Canon Dr Stephen Evans**,  
Rector of St Marylebone Church, London

## Once in Royal David's City

led by the **Church Choir**

## Advent 1955

by **John Betjemen** – read by **Damian Lewis**

## We Three Kings

led by **Laura Wright** and the **Church Choir**

## Little Tree

by **E. E. Cummings** – read by **Sophie Dahl**

## Performance by Joe Stilgoe

## Luke 2.8-14

read by **Rhys Stephenson**

## God Rest Ye Merry, Gentleman

led by the **Church Choir**

## The Night I Met Father Christmas

by **Ben Miller** – read by **Ben Miller**

## Place2Be - the difference you can make

**Dame Benny Refson DBE**,  
Place2Be President and Founder

## Gabriel's Message

performed by **Laura Wright**

## The Quangle Wangle's Hat

by **Edward Lear** – read by **Nina Sosanya**

## Hark! The Herald Angels Sing

led by **Laura Wright** and the **Church Choir**

## The Last Christmas Tree

by **Howard D. Fencel** – read by **Keira Knightley**

## Closing words

from **Karen Howes**, Chair of the  
Place2Be Carol Concert Committee

## Blessing

by **The Revd Canon Dr Stephen Evans**

## Thank you and goodnight

**Katie** and **Joe**

Thank you so much for supporting Place2Be's first ever virtual Christmas Carol Concert this evening. The funds raised by this event will enable us to continue our work, helping to ensure that no child has to face mental health problems alone.







# Readers and performers

## Sophie Dahl



Sophie Dahl began her career as a teenage fashion model, but books and writing were always her first love.

In 2003, Bloomsbury published her bestselling novella, 'The Man With The Dancing Eyes', followed by a novel in 2007, 'Playing With The Grownups'. In October 2019, her first children's book, Madame Badobedah, was published by Walker Books and she is currently working on a sequel.

Sophie was a long term contributing editor at British Vogue, and has written for US Vogue, Harpers Bazaar, The Observer, The Guardian and The Times and served as a Orange Prize For Fiction judge.

She lives in the country with her husband, two young daughters, rescue dog, cats, and tortoise.

## Keira Knightley



Keira Knightley began acting as a child and made her feature film debut in 1995 at 10 years old. After gaining international recognition for her breakthrough role in the hugely popular

football drama film Bend It Like Beckham, Knightley has since enjoyed a critically acclaimed and varied career working across both Hollywood blockbusters and independent films, with titles including Love Actually, Star Wars: Episode 1 - The Phantom Menace, the BAFTA, Golden Globe and Academy Award nominated Pride & Prejudice, The Duchess, The Edge of Love, Academy Award nominated The Imitation Game, and the BAFTA-nominated Anna Karenina. She also played Elizabeth Swann in the fantasy series Pirates of the Caribbean.

More recently Knightley has chosen to undertake projects and lend her voice to films which reflect her ethical and political views. In 2020 Keira Knightley starred in Philippa Lowthorpe's Misbehaviour, alongside Gugu Mbatha-Raw telling the story of the second wave feminists who stormed the 1970 Miss World competition in London.

## Damian Lewis



With an expansive list of diverse film, theatre and television credits, Golden Globe and Emmy Award-winning actor Damian Lewis has evolved into one of this generation's most respected and sought-after actors.

Damian is currently playing Bobby "Axe" Axelrod in the highly-successful Showtime series, "Billions." He is known as Sergeant Nicholas Brody in Showtime's critically acclaimed and award-winning television series "Homeland". Damian's performance earned him a 2013 Golden Globe Award for "Best Performance by an Actor in a Television Series – Drama" and a 2012 Primetime Emmy Award for "Outstanding Lead Actor in a Drama Series". Damian first came to the attention of American audiences in 2001 with his Golden Globe-nominated performance as World War II hero Richard Winters in the award-winning HBO miniseries "Band of Brothers," directed by Steven Spielberg and produced by Tom Hanks.

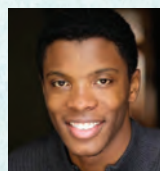
## Ben Miller



Ben Miller is an actor and comedian, best known for writing and starring in The Armstrong and Miller Show and his role as Rowan Atkinson's sidekick, Bough, in the Johnny English franchise.

On television, he is best known for the crime comedy drama Death In Paradise and is soon to be seen on Netflix as Lord Featherington in Shonda Rhimes' button-popping costume drama Bridgerton. He is also a children's author and his latest book, The Day I Fell Into A Fairytale is published by Simon & Schuster.

## Rhys Stephenson



Rhys Stephenson is an actor and TV presenter best known as the energetic, smiling face of children's TV channel CBBC. Since 2017, Rhys has been hosting the presentation links between shows, live from the CBBC studio HQ.





Rhys has presented some of the biggest shows on the CBBC slate, including: Blue Peter; the annual Blue Peter book awards (live); Newsround; Dengineers; and Saturday Mash-Up. More recently Rhys has been working with BAFTA Kids, presenting online content aimed at helping young people, in several videos as part of its 'At home with Place2Be' partnership series. He recently became a Place2Be champion.

In 2015 he won the National Student Television Association (NaSTA) award for Best On Screen Male.

## Joe Stilgoe



Place2Be champion, Joe Stilgoe, is an internationally acclaimed singer, pianist and songwriter. His live shows are a mixture of virtuosic musicianship and breath-taking theatricality, combining on-the-spot improvisation and the quickest of wits.

Joe has created a fresh sound for jazz in the 21st century, known for writing songs that feel like they've been around for years, and adapting classics that sound as though they were just written. As a recording artist he has released five critically lauded albums, including his 2019 Christmas Album.

As composer and lyricist, Joe wrote music and lyrics for a new production of The Jungle Book, which toured the UK to great success in 2017 and 2018, and The Midnight Gang, an adaption of the David Walliams novel, which opened at Chichester Festival Theatre in 2018.

## Nina Sosanya



Nina Sosanya can be seen as 'Mustafa' in Brave New World on TV now, opposite Jessica Brown Findlay and Demi Moore. Also available now is her work as 'Lili Von X' in LITTLE BIRDS with Juno Temple, showing on Sky Atlantic.

Other recent work includes His Dark Materials 1 & 2 (BBC/HBO), Killing Eve 2 (BBC/BBC America) and Good Omens (Amazon). Stage work includes: 'Frozen' in the West End with Suranne Jones; 'Platonov' and 'Ivanov', as part of the Chichester/

National Theatre's Young Chekhov season; and 'Elegy', 'Privacy' and 'The Vote' at the Donmar Warehouse. Features include: RED JOAN with Judi Dench, Ricky Gervais' David Brent: Life on the Road and Love Actually.

## Katie Thistleton



Katie Thistleton is a TV and radio presenter, NCTJ qualified journalist and author, best known for her work on BBC Radio 1 and CBBC.

Building on her 'agony aunt' experience, Katie's debut book 'Dear Katie: Real Problems, Real Advice' was released in February 2018 and offers warm yet honest advice on the multitude of struggles the UK's children are facing. Katie is currently writing her second book.

During lockdown, Katie was chosen to be the main presenter fronting the BBC Bitesize Daily TV shows for secondary school students.

Katie is passionate about mental health awareness, she is an ambassador for Place2Be and is currently training to be a counsellor. Katie also writes a monthly column for Psychologies Magazine.

## Laura Wright



Laura became one of the decade's biggest-selling artists after she won BBC Chorister of the Year 2005 at the age of 15. She is now writing and recording her seventh album.

Laura has written and performed for Her Majesty Queen Elizabeth II and the Duke of Edinburgh on numerous occasions, most memorably for Her Majesty's 90th birthday.

In her role as a UK Ambassador for the Invictus Games, Laura wrote the anthem *Invincible* and has performed the song at each official Opening Ceremony. Laura became the England Rugby team's first ever official singer and also performs for NFL, RFU, RFL, WSB, Jockey Club, British Grand Prix and the FA.

Laura has spoken about her own mental health and is a passionate advocate of the positive impact of both singing and sport on wellbeing.



***We are proud that Place2Be is an integral part of our provision... Place2Be ensures that no child slips through the net. Many of our children face an increasing number of challenges in their lives, one-to-one counselling and Place2Talk ensure that the children have an opportunity to talk and be listened to."***

Wendy McCormack, Executive Headteacher, Salford







# DOMUS

*Proud sponsor of Place2Be*

Wishing you a very  
Merry Christmas from the  
Domus team; home of tiles  
and engineered flooring

domusgroup.com

## Thank you to all our wonderful partners who created a Christmas wreath for this year's prize draw which ran throughout November.

This festive fundraising drive saw a whole host of high-profile personalities from the world of design, floristry and the culinary arts, including Philippa Craddock, Kit Kemp, Lydia Elise Millen and The Dorchester, join forces to raise funds in support of Place2Be.

The wreaths are inspired by themes of wellbeing, childhood and in light of this challenging year, hope and optimism.

While the prize draw has now closed on nine of the wreaths we are delighted to let you know that you can still enter the draw to win the beautiful gingerbread wreath created by award-winning Mich Turner MBE until 7pm on Thursday 3 of December. The winner of this wreath will be announced live on the night of the Carol Concert. Mich hopes to bring some Christmas cheer through charming characters using nostalgic and delicious gingerbread that both smells and tastes of Christmas, with tickets just £10 make sure you don't miss out! <https://givergy.uk/Place2Bewreathdraw>



All proceeds from this prize draw will go directly to supporting Place2Be's vital work with children and families across the UK. Thank you to everyone who bought tickets and congratulations to our lucky winners!

*Photo credit: Philip Hammond, The Dorchester*





## YOUR MAGICAL CHRISTMAS IN DEVON



### *Christmas at Bovey Castle*

It's certainly been a year with a difference, and we all need something to look forward to!

December is our favourite time at Bovey Castle and we can't wait to deck the halls and get the mulled wine simmering. The aroma of roaring fires mingling with the fresh smell of pine from the Christmas trees is really quite magical and we're keen to get the celebrations started.

We invite you to join us for Christmas and New Year breaks, pampering spa treatments, the great outdoors on Dartmoor, not to mention the happy thought of our teams plying you with excellent Champagne, wine and fabulous food.

We look forward to welcoming you and sharing the festive season with you.

PROUD TO BE PART OF EDEN HOTEL COLLECTION

BOVEYCASTLE.COM | 01647 445000







# Order of service

## Introduction

Katie Thistleton and Joe Stilgoe

## Welcome

The Revd Canon Dr Stephen Evans,  
Rector of St Marylebone Church, London

## Once in Royal David's City

led by the **Church Choir**

### *Soloist*

Once in royal David's city  
Stood a lowly cattle shed,  
Where a mother laid her baby  
In a manger for his bed:  
Mary was that Mother mild,  
Jesus Christ her little Child.

### *All*

He came down to earth from heaven  
Who is God and Lord of all,  
And his shelter was a stable,  
And his cradle was a stall:  
With the poor and mean and lowly  
Lived on earth our Saviour holy.

For he is our childhood's pattern  
Day by day like us he grew,  
He was little, weak and helpless,  
Tears and smiles like us he knew:  
And he feeleth for our sadness,  
And he shareth in our gladness.

And our eyes at last shall see him  
Through his own redeeming love,  
For that Child so dear and gentle,  
Is our Lord in heaven above:  
And he leads his children on  
To the place where he is gone.

Not in that poor lowly stable,  
With the oxen standing by,  
We shall see him: but in heaven,  
Set at God's right hand on high,  
Where like stars his brothers crowned,  
All in white shall wait around.

## Advent 1955

by John Betjemen –  
read by **Damian Lewis**

## We Three Kings

led by **Laura Wright** and the  
**Church Choir**

We three kings of Orient are  
Bearing gifts we traverse afar  
Field and fountain, moor and mountain,  
Following yonder star:

### *Chorus*

*O star of wonder, star of night,  
Star with royal beauty bright,  
Westward leading, still proceeding,  
Guiding us to thy perfect light.*

Born a king on Bethlehem plain,  
Gold I bring to crown him again  
King for ever, ceasing never,  
Over us all to reign:

### *Chorus*

Frankincense to offer have I;  
Incense owns a deity nigh:  
Prayer and praising, all men raising,  
Worship him, God most high:

### *Chorus*

Myrrh is mine; it's bitter perfume  
Breathes a life of gathering gloom;  
Sorrowing, sighing, bleeding, dying,  
Sealed in the stone-cold tomb:

### *Chorus*

Glorious now, behold him arise,  
King, and God, and sacrifice!  
Heav'n sings alleluya,  
Alleluya the earth replies:

### *Chorus*





# Order of service

## Little Tree

by **E. E. Cummings**  
read by **Sophie Dahl**

## Performance

by **Joe Stilgoe**

## Luke 2.8-14

read by **Rhys Stephenson**

## God Rest Ye Merry, Gentlemen

led by the **Church Choir**

God rest ye merry, gentlemen,  
Let nothing you dismay,  
Remember Christ our Saviour  
Was born on Christmas Day,  
To save us all from Satan's power  
When we were gone astray:

### Chorus

*O tidings of comfort and joy,  
comfort and joy!  
O tidings of comfort and joy!*

From God our heavenly Father,  
A blessed angel came,  
And unto certain shepherds  
Brought tidings of the same,  
How that in Bethlehem was born  
The Son of God by name

### Chorus

And when they came to Bethlehem  
Where our dear Saviour lay,  
They found him in a manger,  
Where oxen feed on hay;  
His mother Mary kneeling down,  
Unto the Lord did pray

### Chorus

Now to the Lord sing praises,  
All you within this place,  
And with true love and brotherhood  
Each other now embrace;  
This holy tide of Christmas  
All other doth efface

### Chorus

## The Night I Met Father Christmas

by **Ben Miller**  
read by **Ben Miller**

## Place2Be –

## The difference you can make

**Dame Benny Refson DBE,**  
Place2Be President and Founder

## Gabriel's Message

performed by **Laura Wright**

The angel Gabriel from heaven came  
His wings as drifted snow,  
His eyes as flame  
"All Hail" said he "Thou lowly maiden Mary  
Most highly favoured lady"

### Gloria

"For known a blessed mother thou shalt be  
All generations laud and honour thee  
Thy Son shall be Emmanuel by seers foretold  
Most highly favoured lady"

### Gloria

Then gentle Mary meekly bowed her head  
"To me be as it pleaseth God" she said  
"My soul shall laud and magnify His holy name"  
Most highly favoured lady

### Gloria





### The Quangle Wangle's Hat

by **Edward Lear**  
read by **Nina Sosanya**

### Hark! The Herald Angels Sing

led by **Laura Wright** and  
the **Church Choir**

Hark! the herald angels sing  
Glory to the new-born King,  
Peace on earth and mercy mild,  
God and sinners reconciled:  
Joyful all ye nations rise,  
Join the triumph of the skies,  
With the angelic host proclaim,  
Christ is born in Bethlehem:

#### Chorus

*Hark! the herald angels sing  
Glory to the new-born King*

Christ, by highest heaven adored,  
Christ, the everlasting Lord,  
Late in time behold him come  
Offspring of a Virgin's womb!  
Veiled in flesh the Godhead see,  
Hail the incarnate Deity!  
Pleased as man with man to dwell,  
Jesus, our Emmanuel:

#### Chorus

Hail the heaven-born Prince of peace!  
Hail the Sun of Righteousness!  
Light and life to all he brings,  
Risen with healing in his wings;  
Mild he lays his glory by,

Born that man no more may die,  
Born to raise the sons of earth,  
Born to give them second birth

#### Chorus

### The Last Christmas Tree

by **Howard D. Fencil**  
read by **Keira Knightley**

### Closing words

from **Karen Howes**,  
Chair of the Place2Be  
Carol Concert Committee

### Blessing

by **The Revd Canon Dr Stephen Evans**

### Thank you and goodnight

**Katie and Joe**





THE WHITE COMPANY  
LONDON

*Proud sponsors of Place2Be*



*Magical Christmas moments*

[thewhitecompany.com](http://thewhitecompany.com)



# Place2Be's Christmas Wishes

We are delighted to have had the support of Place2Be's longstanding partner **The White Company** to help us offer **Place2Be's Christmas Wishes** digitally this year. Supporters who purchased a 'Little Wish' or a 'Big Wish' via the Place2Be website received a lucky dip gift from The White Company to the value of their donation or higher.

All proceeds from this festive shopping opportunity are supporting Place2Be's vital mental health services for children and young people.

**THE WHITE COMPANY**  
LONDON



## Leave a gift in your Will



A gift to Place2Be in your Will can provide mental health support in schools for children and young people into the future.

Your gift ensures that your legacy lives on through supporting future generations and enabling children and young people to receive the mental health support in schools to help them thrive.

### Free will-writing service

Through our partner, Bequeathed, make your Will online for free. Simply create an account and follow the steps to make your Will at [bequeathed.org/p/place2be](https://bequeathed.org/p/place2be)

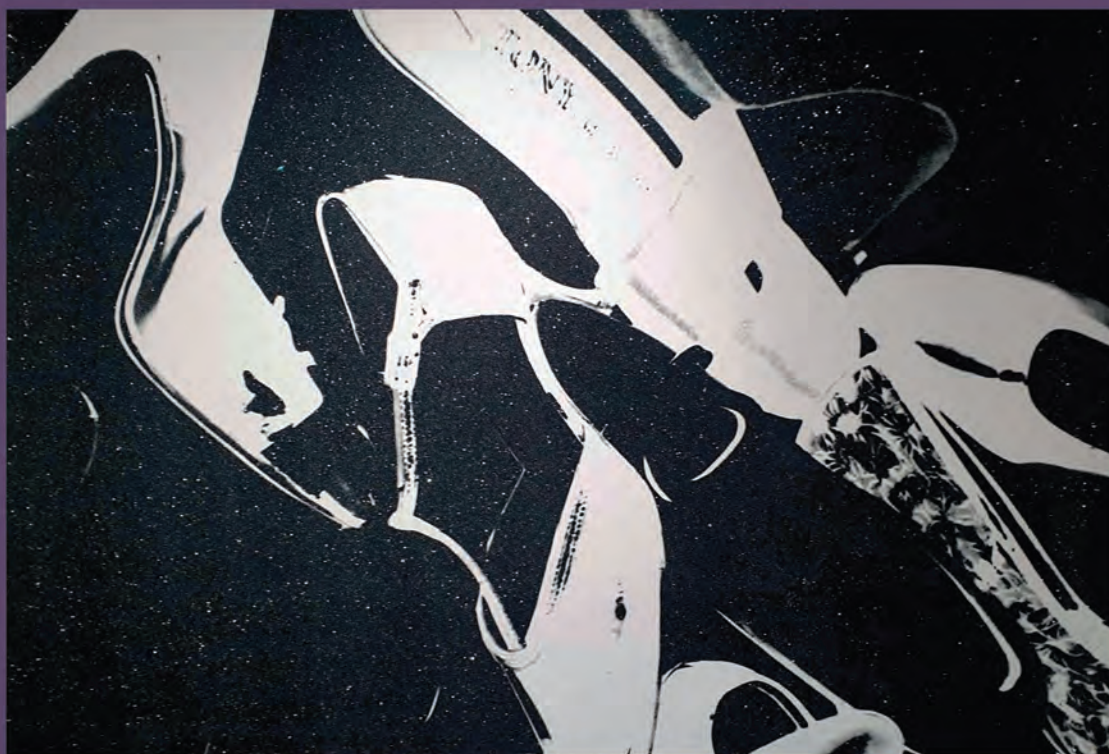
For enquiries or to find out more about what your gift could do, please contact [legacies@place2be.org.uk](mailto:legacies@place2be.org.uk) or **0207 923 5593**.





# TANYA BAXTER CONTEMPORARY

## ART ADVISORY



Andy Warhol - *Diamond Dust Shoe 255*, 1980, Screenprint with Diamond Dust, Ed. of 60, 40 × 60 in, 101.6 × 152.4 cm

The directors of  
TANYA BAXTER CONTEMPORARY

Invite you to

## The Christmas Exhibition

Thursday 3rd to Thursday 31st December 2020

436 Kings Road, Chelsea, London SW10 0LJ

Season's greetings and thank you for all your support and business.

Happy New Year!

[tanya@tanyabaxtercontemporary.com](mailto:tanya@tanyabaxtercontemporary.com)

+44 (0) 7961360407

TANYA BAXTER CONTEMPORARY 436 Kings Road, Chelsea, London, SW10 0LJ T 44 (0) 20 7351 1367 / 079 6136 0407  
[tanya@tanyabaxtercontemporary.com](mailto:tanya@tanyabaxtercontemporary.com) [www.tanyabaxtercontemporary.com](http://www.tanyabaxtercontemporary.com)



# Winter Wishes

by The Art Room at Place2Be

*'The most fantastic, magical things can happen, and it all starts with a wish.'*

*Jiminy Cricket*

## The Art Room

At Place2Be we believe that art is a creative tool to develop resilience, build confidence and connect with others. Our Art Room team are specialists in using art to support and enhance children and young people's wellbeing.

## Winter Wishes

As we embrace the festive season and reach the end of this year, we encourage families to look positively towards the future by thinking about wishes for themselves and their loved ones. Our Winter Wishes Project will help children to explore what is important to them and those they care about. We hope that families can use this project as an opportunity to come together creatively and share their wishes for the new year with each other.

### Project Aims

- To explore what is important to you and your loved ones
- To think about your wishes for the future
- To create a festive decoration displaying your winter wish

## Inspire

These resources may help inspire you with your winter wish creations.

You can watch the following stories being read aloud on YouTube:

- The Wish Tree by Kyo Maclear and Chris Turnham (aged 2-5 years)
- The Perfectly Perfect Wish by Lisa Mantchev and Jessica Courtney
- Tickle (aged 4-8 years)
- I Wish You More by Amy Krouse Rosenthal and Tom Lichtenheld (aged 4-6 years)



Here are the first ever photographs of snowflakes captured by Wilson Bentley in the early 1900's. Notice how many different shapes and patterns there are!

During the Tanabata Festival in Japan, children tie their wishes to trees.



## Create

Time to make your festive winter wish decorations!

You will need: paper/card, scissors, ribbon/ string/ pipe cleaner, coloured pens/pencils/ glitter/ sequins/pom poms for decoration (optional) and glue

1. Choose a shape for your decoration. Here are some ideas:
  - Snowflake • Star • Bauble • Snowman • Christmas tree
2. Use a template or draw an outline of your festive shape onto paper or card and cut it out. There are lots of videos on YouTube on how to make snowflakes like the ones in the images by folding and cutting paper.
3. Write or draw your wish(es) onto your shape and decorate it however you like.
4. Use a pencil/pen or hole punch to make a small hole at the top of your decoration. Loop ribbon, string, a pipe cleaner or a strip of paper through the hole and tie or stick the ends together.
5. Hang your winter wish decoration on your Christmas tree or you can choose to hang it somewhere else.



## Reflect

Take some time to reflect on your artwork and share your wishes with others.

- Which part of your decoration do you like the most?
- Think about someone you care about. What do you wish for them?
- Imagine seeing your wishes come to life. What would they look like?

## Share your creations

We'd love to see your artwork!

share photos of your creations with us on social media:

Instagram: @place2be Twitter: @Place2Be

Facebook: @place2becharity LinkedIn: Place2Be



# GIVE THE BEST OF BOTH WORLDS THIS CHRISTMAS



**20%**  
OF ANY  
SUBSCRIPTION  
TAKEN OUT WILL  
BE DONATED  
TO PLACE2BE



Country & Town House is a beautiful British monthly lifestyle magazine for those who enjoy the very best of city and country life. Take out an annual subscription for 2021, or gift it as the perfect stocking filler this Christmas.

Country & Town House is pleased to support Place2Be and 20 per cent of all subscriptions taken out in December 2020 will be donated to the charity.

## COUNTRYANDTOWNHOUSE.CO.UK/SUBSCRIBE

Enter code **PLACE2BE** at the checkout to activate the donation



[@countryandtown](https://twitter.com/countryandtown) [f/countryandtownhousemagazine](https://facebook.com/countryandtownhousemagazine) [i/countryandtownhouse](https://instagram.com/countryandtownhouse)



# Iced Gingerbread Biscuits

Christmas provides us all with the opportunity to showcase everyday bakes and showstopper cakes. From simple iced gingerbread biscuits to more elaborately decorated festive wreaths and gingerbread houses, these treats can be made up to four weeks in advance – to take you right through advent. Alternatively, make your own templates from thick card and fashion the colours to complement your theme.

*Makes about 30 biscuits*

## Ingredients

### For the gingerbread biscuits

425g (15oz) plain flour,  
plus extra for dusting  
1 tbsp ground ginger  
2 tsp ground cinnamon  
1/2 tsp ground cloves  
1 tsp ground nutmeg  
1 tsp baking powder  
1/2 tsp bicarbonate of soda  
140g (4 1/2oz) unsalted butter,  
softened  
165g (5 1/2oz)  
dark muscovado sugar  
1 large egg yolk  
165g (5 1/2oz) treacle  
1 tsp vanilla extract  
1–2 tbsp milk

### For the royal icing

3 large egg whites (about 125g/4oz)  
500–600g (1lb 1oz–1lb 5oz) icing sugar  
3 tbsp lemon juice

## To make the gingerbread biscuits

1. In a mixing bowl, sift the flour, spices and raising agents together.
2. Cream the butter and sugar together in a separate large bowl.
3. Blend the egg yolk together with the black treacle, vanilla extract and milk. Whisk into the creamed mixture.
4. Add the flour to the batter and mix until the dough just comes together. Wrap the dough in cling film and chill for 30 minutes to rest.
5. Preheat the oven to 180°C fan (200°C/400°F/Gas 6) and line a baking sheet with non-stick baking paper.
6. Lightly knead the dough and roll out on a lightly floured work surface. Stamp out cookie shapes and place on the prepared baking sheet, spaced apart.
7. Bake for 8 minutes until golden. Transfer to a wire rack to cool.



*Continued*





## Iced Gingerbread Biscuits *Continued*

### To make the royal icing

1. Lightly whisk the egg white in a large, clean bowl until frothy.
2. Add the icing sugar and beat until the icing resembles freshly whipped double cream. Add the lemon juice through a tea strainer and continue beating until smooth and glossy. The icing should be mallowy and not too stiff. Aim for the consistency of freshly whipped double cream. If it looks grainy, add a little more egg white or cool water.

### To decorate the biscuits

To decorate, fit a piping bag with a No. 2 nozzle and fill with the white royal icing. Decorate the biscuits and then leave until set before storing in an airtight container. Store at an airtight container at room temperature for up to a week.

*From Everyday Bakes to Showstopper Cakes by Mich Turner MBE, £20 Frances Lincoln.*



**Place2Be is offering free online mental health training for teachers.**

This online children's mental health training course developed from our work in schools, enhances professionals' understanding of children's mental health and introduces approaches that foster positive wellbeing in schools and communities. We have versions for teachers, student teachers and youth workers.

We are pleased to be able to offer the course free to qualified teachers and school-based staff in the UK.

**Find out more at [place2be.org.uk/foundation](https://place2be.org.uk/foundation) or get in touch [schools@place2be.org.uk](mailto:schools@place2be.org.uk)**





# Thank you

**Thank you to the wonderful supporters for making the Place2Be Christmas Carol Concert possible:**

## Carol Concert Committee Members

Karen and Andrew Howes (Co Chair)  
Carole Annett  
Tanya Baxter  
Olivia Griffin  
Jo James  
Yahya Mirjan  
Andrew Mitchell  
Grace Newey  
Penny Sainsbury  
Zoe Stevens

## Partners

Platinum Partner - The Rigby Group  
Gold Partner - Nicolaisen Invest Uk Ltd  
Silver Partner - Domus  
Media Partner - Country & Town House



*Special thanks to St Marylebone Parish Church, everyone at Perception Live, our presenters, performers, readers and illustrator.*



## Corporate Supporters

The White Company

## Wreath Partners

Rob Van Helden  
Taylor Howes and Silverlining  
Kit Kemp and Fine Cell  
Philippa Craddock  
Lydia Elise Millen  
The Dorchester  
Mich Turner MBE, Little Venice Cake Co.  
Celine Interior Design and Neil Birks  
Martin Brudnizki Design Studio  
Helen Amy Murray



## Feeling inspired?

### We're looking for motivated individuals to join our 2021 Carol Concert Committee!

The Carol Concert Committee is integral in ensuring the success of Place2Be's annual Carol Concert. Members work with Place2Be throughout the year to source sponsorship, promote the event to their networks and make sure that each event is bigger and better than the last. If you're interested in finding out more, please get in touch with the Place2Be team on 020 7923 5500 or email [events@place2be.org.uk](mailto:events@place2be.org.uk).



*Natalia Shaloshvili is an artist and children's book author and illustrator. She's a big fan of Beatrix Potter, Harry Potter, English crime stories and weather. Her characters are cute, calm, humble and amusing, living their ordinary lives in a strange and curious world.*

*Instagram: @nataly\_owl Represented by Goodillo Agency*





Thank you for joining  
us for our first virtual  
Carol Concert and  
helping to raise funds  
to support children's  
mental health

[place2be.org.uk](https://place2be.org.uk)

This is a fundraising event held by and for Place2Be.

Registered office: 175 St. John Street, London, England EC1V 4LW.  
Registered charity in England and Wales (1040756) and in Scotland (SC038649).  
Registered company in England and Wales (02876150).



Registered with  
**FUNDRAISING  
REGULATOR**